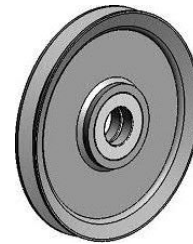


SHEAVE WITH BALL BEARINGS

- Electrogalvanised
- 6200-2RS series bearings
- Raw material, carbon steel (C45, A105 or equivalent)
- Other dimensions available upon request



Size	Reference	Group code	Ø wire (mm)	ØA/ ØB sheave (mm)	C	D	R	Bearings	WLL (t)	Weight (kg)
01	CSB012	104359	6-7	133/150	32	25	3,7	6205-2RS	1,6	1,75
01	CSB014	105639	7,5-8	125/150			4,2			
02	CSB022	104389	7-8	152/175	34	30	4,2	6206-2RS	2	2,7
02	CSB024	105649	9-10	150/178			5,3			
03	CSB032	104419	8-9	172/200	36,5	35	4,8	6207-2RS	2,5	4,1
03	CSB034	105659	10-11	165/200			5,8			
04	CSB042	104449	9-10	180/210	38,5	40	5,3	6208-2RS	3,2	5,1
04	CSB044	105669	11-12	180/210			6,3			
05	CSB052	104479	10-11	200/235	43	50	6	6210-2RS	4	6,9
05	CSB054	105679	12-13	195/235			7			
06	CSB062	104509	11-12	228/270	48	60	6,5	6212-2RS	6,3	10,2
06	CSB064	105689	13-14	225/270			7,5			
07	CSB072	104539	12-13	257/297	48	60	7	6212-2RS	6,3	12,3
07	CSB074	105699	14-15	257/297			8			
08	CSB082	104569	13-14	280/330	56	80	7,5	6216-2RS	10	23,1
08	CSB084	105709	15-16	280/330			8,5			
09	CSB092	104599	15-16	320/375	56	80	8,5	6216-2RS	10	24,5
09	CSB094	105719	17-18	306/370			9,5			
10	CSB102	104629	17-18	355/425	64	90	9,5	6218-2RS	12,5	34
10	CSB104	105729	19-20	355/425			10,5			
11	CSB112	104659	19-20	400/470	72	100	10,5	6220-2RS	16	45
11	CSB114	105739	22-24	400/470			13			
12	CSB122	105759	20-22	440/510	80	110	12	6222-2RS	20	65
12	CSB124	105779	24-26	430/510			14			
13	CSB132	105799	22-24	500/570	85	120	13	6224-2Z	20	115
14	CSB142	105829	24-26	550/630	85	130	14	6226-2Z	25	140

